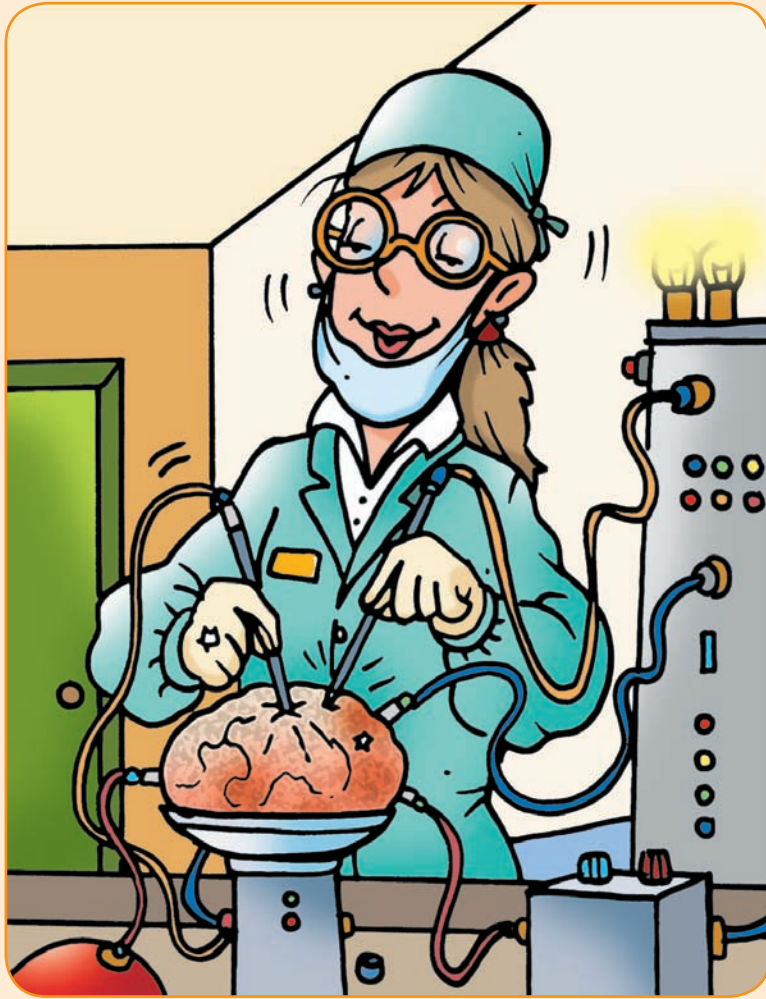


1. Be about the same size as an adult head.
  2. Show the paths of thought waves.
  3. Have an area for creativity.
  4. Have an area for emotion.
  5. Have an area for imagination.
  6. Have an area for generating weird and wacky thoughts.
  7. Have an area for generating fun.
  8. Have a socket to connect to the outside world.
- Organise the children into pairs or groups of three or let them choose one or two other children to work with.
  - Tell the children to discuss with their partner(s) what they have been asked to do and give them an opportunity to clarify their understanding with you.
  - Remind them that they will have only 50 minutes to build the brain.
  - Show them the available tools and resources.



### Drawing together

- After exactly 50 minutes, ask the children to place their brain (finished or not) in a designated display area.
- Ask the learners to look at their finished brains and assess how well they have met the criteria that were set.

### Support

- Carefully arrange the class into appropriate groups.
- Extend or reduce the time allowed.
- Suggest starting points and materials to use, for example, base the brain on an egg box and ask children to dedicate each section of the box to a different aspect of the brain.
- Adapt the success criteria to ensure that children are stretched but able to achieve success.

- Demonstrate using the chart that you drew up at the preparation stage, then let the children use this chart to assess each others' brains (it is acceptable for a brain to meet criteria from different columns).
- Encourage the children to ask questions about each others' brains.

### Extension

- Reduce the time allowed to make children think more quickly or extend the time allowed and expect a more developed, original brain.
- Encourage children to find more information about how the brain is creative and/or imaginative and how it handles emotions. Then ask them to make suggestions for adapting their Holo Brain 3000s.