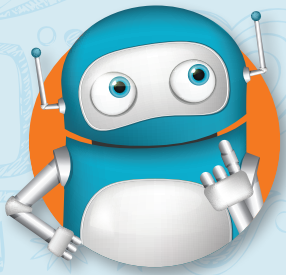


Adding suffixes to words ending fer



What is the rule for adding suffixes to words ending **fer**?

Recap

- You double the end consonant if the final vowel is stressed.
- You do not double the end consonant if the final vowel is unstressed.

Revise

Below are some examples for adding suffixes to words ending in **fer**.

refer + ed = referred
 stressed vowel sound → end consonant doubled

transfer + ing = transferring
 stressed vowel sound → end consonant doubled

BUT

refer + ence = reference
 unstressed vowel sound → end consonant **not** doubled

Skills check

1. Match each root word to its correct ending.

- | | |
|------------------|-------------|
| a. refer + ing | referring |
| | referring |
| b. transfer + ed | transferred |
| | transferred |
| c. refer + e | refere |
| | referee |
| d. prefer + ence | preference |
| | preference |
| e. prefer + ing | preferring |
| | preferring |

KEY WORDS

suffix
root word
syllable

