

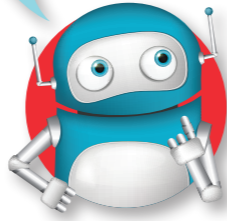
Tables and timetables

Learn

Information is often presented in tables. This table provides complicated information about some planets in our solar system.

Planet	Diameter (km)	Day length (hours)	Orbit time (days)	Temp. (°C)
Mercury	4878	4223	88	167
Venus	12,104	2808	225	480
Earth	12,756	24	365	20
Mars	6794	24.5	687	-65


You can spot facts about planets and compare them too. Each column has different units.



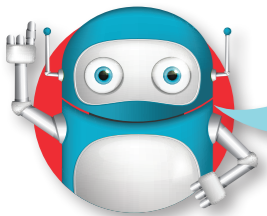
This timetable shows bus times from the bus station to the local school.

Check with a partner that you know how to read the timetable properly. These buses have a circular route. Can you see the halfway point?

Can you see the difference between the number 6 and 7 bus routes? Why wouldn't you go to the supermarket on the number 6 bus? What is the longest time it takes to get between two stops?

BUS TIMETABLE 				
Bus number	6	7	6	7
Bus station	10:00	10:15	10:30	10:45
High Street	10:08	10:23	10:38	10:53
Supermarket		10:30		11:00
Train station	10:15		10:45	
Doctor's surgery	10:24	10:34	10:54	11:04
School	10:27	10:37	10:57	11:07
Doctor's	10:30	10:40	11:00	11:10
Train station	10:39		11:09	
Supermarket		10:45		11:15
High street	10:46	10:52	11:16	11:22
Bus station	10:54	11:00	11:24	11:30

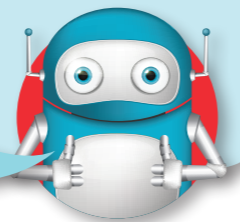
Can you spot the patterns for the bus times?



✓ Tips

- Use your fingers to help you trace along timetables and charts. Or if you have a ruler available, using this is even better – it is easy to misread timetables and charts.

Let your fingers do the walking!



Talk maths

Timetables are available from bus and train stations. They are also on the internet, and sometimes these are interactive.

Use timetables to plan a day trip. Plan at least four journeys with as little time waiting as possible.



Did you know?

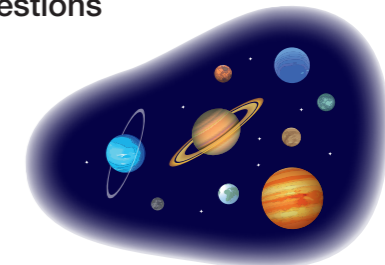
There are over 5 billion bus journeys made in the UK each year.

Activities



1. Use the table on page 78 to answer these questions about our solar system.

- Which is the largest planet?
- Which is the coldest planet?
- Which planet has the fastest orbit?
- Which planets have a similar length of day?



2. Use the bus timetable on page 78 to answer these questions.

- Which bus has a shorter journey from the bus station to the school?
- How often does the number 6 leave the bus station?
- How long is the journey from the doctor's surgery to the school?
- Why do you think the number 6 round journey takes longer?

Problems



Look at the bus timetable on page 78.

Brain-teaser

Trevor has a doctor's appointment at 10:45am. Which bus should he catch from the bus station?

Brain-buster

A number 7 bus arrives at school at 15:07. What time did it leave the bus station?