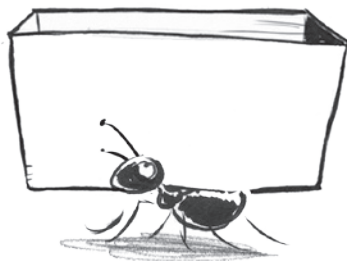


# Ant adjectives

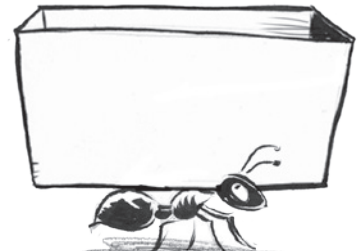
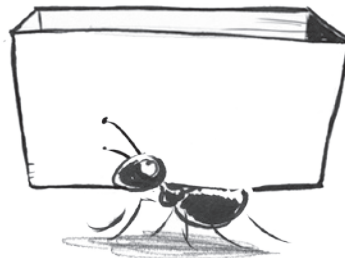
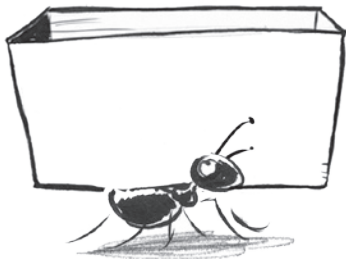
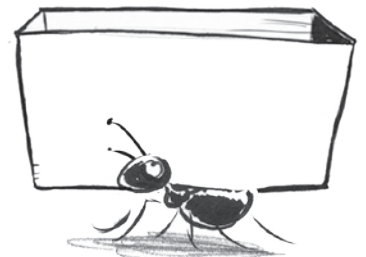
Look inside the ants' nest for word beginnings you can use to make five adjectives that end in **ant**. Write them in the boxes.



Some words end with **ant** and some with **ent**.



opul abund  
ignor differ import excell  
depend hesit



Use the **ant** adjectives to complete the sentences below.

1. There was an \_\_\_\_\_ supply of fruit at the market.
2. She thought the shopkeeper was rude and \_\_\_\_\_.
3. You must complete this \_\_\_\_\_ homework.
4. As a \_\_\_\_\_ teenager he relied on his weekly allowance.
5. The \_\_\_\_\_ boy peered into his new classroom.

How did you do?



# Making words with ance, ancy, ence, ency

Find example words from the box to match the rules. The first one has been done for you.

elegance appearance recent agent frequent reliance payment  
significance vacancy insurance confidence reference interference

ant, ance, ancy	Example words
After a hard <b>g</b> or <b>c</b>	elegance significance
If the root word ends in <b>y</b> , drop the <b>y</b> and add <b>i</b>	
If the word ends with <b>ation</b> , replace with <b>ance</b> or <b>ancy</b>	
If the word ends with <b>ure</b> , drop the <b>e</b>	
If the word ends with <b>ear</b> , simply add <b>ance</b> or <b>ancy</b>	

ent, ence, ency	Example words
If the word ends with a soft <b>c</b> , soft <b>g</b> or <b>qu</b>	
If the syllable before is <b>id</b>	
If a word ends with <b>ere</b> or <b>er</b>	
If a word ends with <b>ment</b>	

How did you do?



# Spot the difference



The prefix **re** means again or anew. If adding **re** makes a word that already exists, add a hyphen to avoid confusion.

Change the nouns to adjectives and change the adjectives to nouns. Use **ant, ance, ancy** or **ent, ence, ency** to complete the crossword puzzle.

### Across

- 4. fragrant (adj)
- 5. frequency (n)
- 6. absence (n)
- 7. vacant (adj)
- 9. excellent (adj)
- 10. elegant (adj)

### Down

- 1. radiance (n)
- 2. proficient (adj)
- 3. distance (n)
- 8. obedience (n)

The crossword puzzle grid consists of 10 numbered starting points for words:

- 1. Down (5 cells)
- 2. Down (5 cells)
- 3. Down (5 cells)
- 4. Across (6 cells)
- 5. Across (8 cells)
- 6. Across (5 cells)
- 7. Across (6 cells)
- 8. Down (5 cells)
- 9. Across (6 cells)
- 10. Across (6 cells)

How did you do?

