

Tissues, organs and organ systems

NAIL IT!



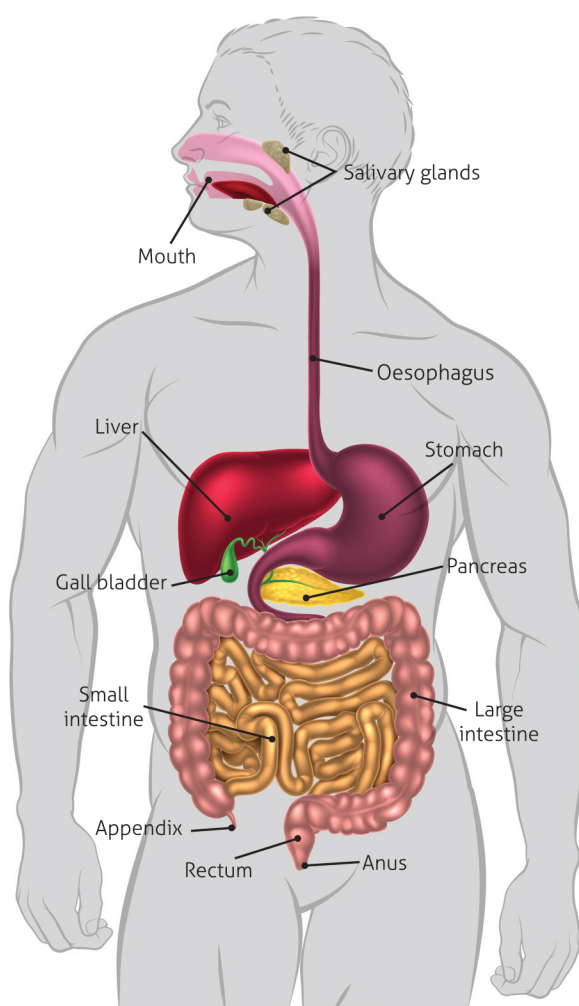
Make sure you check which parts of each topic you need to know for your exam board.

The human digestive system

The human digestive system breaks down all of the food that you eat; mechanically, by chewing, and chemically, using enzymes.

Which organs are parts of the human digestive system?

The human digestive system is made up of the stomach, small intestine, large intestine, pancreas, liver and gall bladder.



Chewed food mixes with saliva from the **salivary glands**, and then travels down the **oesophagus** to the **stomach**. Large lumps of food are broken down into smaller lumps in the stomach, before moving into the **small intestine**. Bile from the **liver**, and pancreatic juices from the **pancreas** are added to the food in the small intestine. These help with digestion.

Food needs to be broken down into small, soluble molecules so it can be absorbed into the bloodstream. Any food that is not digested (such as fibre) moves into the **large intestine**. Here, water is removed and a solid mass known as **faeces** passes out of the body through the anus.

SNAP IT!

Find a picture of the digestive system, take a photo and learn it. You may be asked to label a similar diagram in the exam.